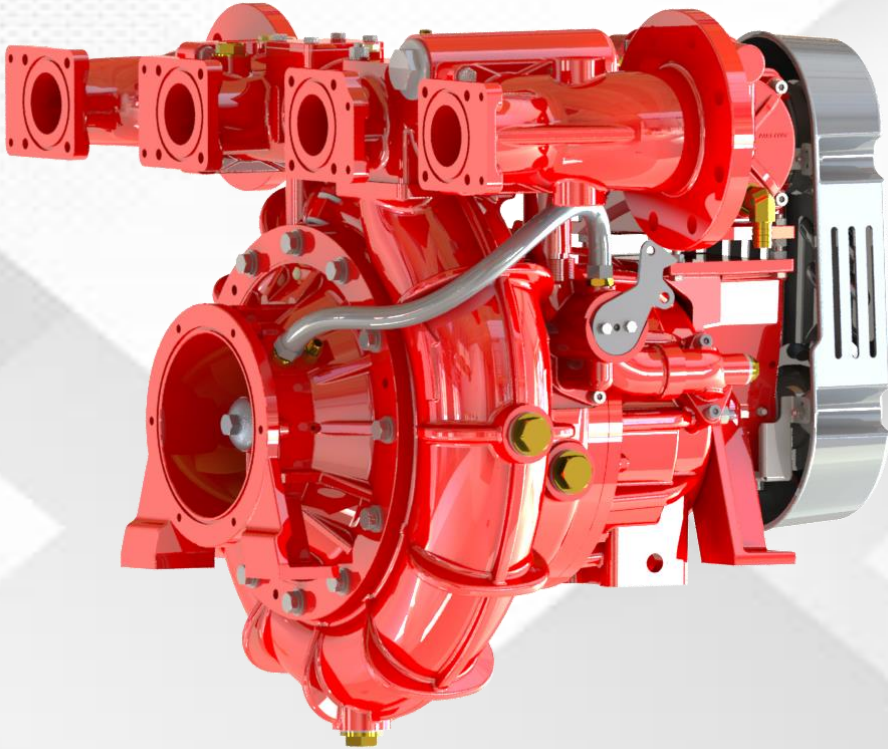


TRIGA MULTI STAGE FIRE PUMPS



KEY FACTORS



Performance :

Low Pressure Stages :

4000 LPM @ 10 Bar

High Pressure Stage :

250 LPM @ 40 bar | 400 LPM @ 40 bar



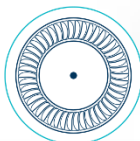
Primer

Twin Piston Reciprocating Type Fully Automatic



Confirming to Standards

EN 1028 & NFPA 1901



Pump Stages

- Normal Pressure (10 bar) - Single Stage Centrifugal Type
- High Pressure (40 bar) - 4 Stage Centrifugal Type



Material of Construction :

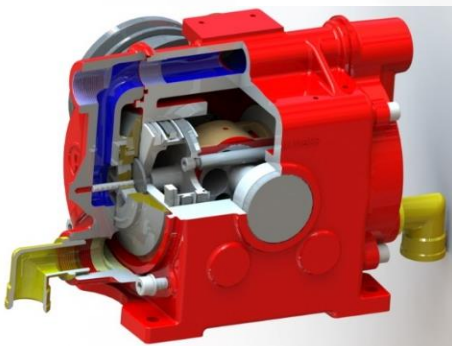
- ☐ Aluminium
- ☐ Bronze
- ☐ Stainless Steel

Specification Chart

Pump Type	High Low Pressure Type Fire Pumps
Capacity	Low Pressure Stage 4000 LPM @ 10 Bar High Pressure Stage 250 LPM @ 40 bar 400 LPM @ 40 bar
Low Pressure Stage	Single Stage Centrifugal Type (Closed type impeller)
High Pressure Stage	4 Stage Centrifugal Type (Closed type impellers)
Pump MOC	Aluminium / Bronze / Stainless Steel
Priming System	Twin Piston Type fully automatic
Confirming to standards	EN 1028 & NFPA 1901
Pump Drain	At bottom most point manual valve provided
Suction Manifold	Suction Connection Required for Respective capacity as below- For 4000 LPM Connect – 6 Inch Suction Pipe
Low Pressure Delivery Manifold	In the scope of fabricator or can be supplied in standard configuration.
High Pressure Delivery	2 High Pressure Lines 1" Each 250 LPM to 400 LPM @40 bar

TRIGA Multi Stage Pump Features

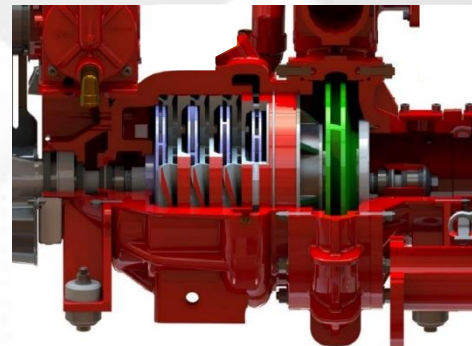
Fully Automatic Twin Piston Priming
System Mounted on Pump



Thermal Relief Valve



1-Stage Low Pressure and 4 Stage
High Pressure Mounted on Single
Stainless Steel Shaft

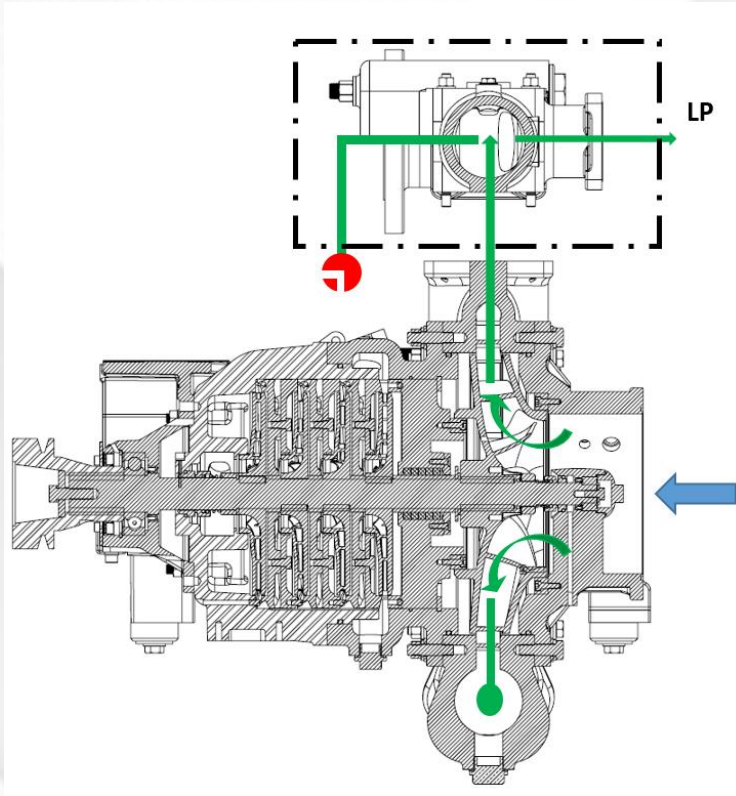


TRIGA Fire Solutions, LLC
PASSION TO PROTECT

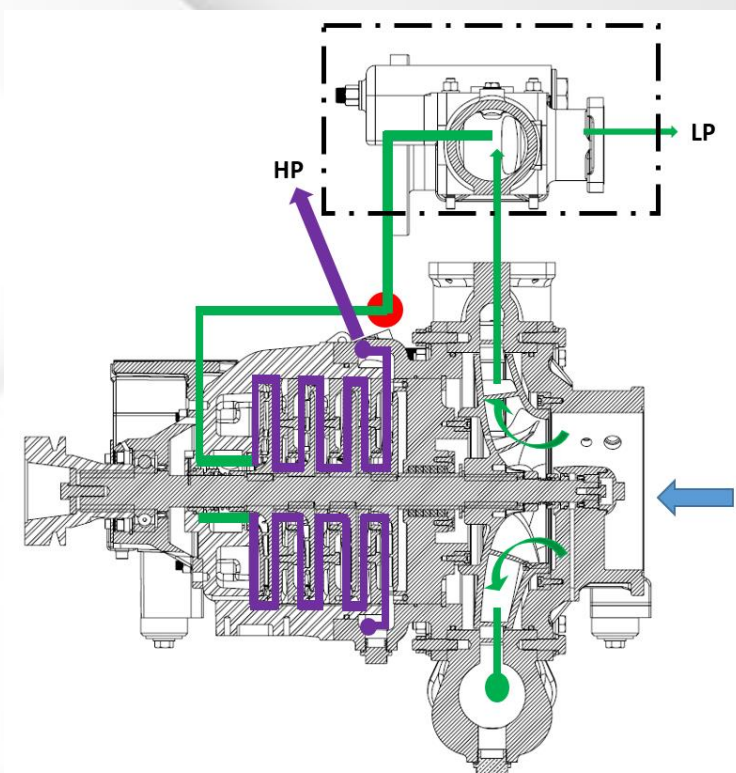
340 Taxiway Bravo, Beeville, Texas 78102, US
Contact Number : 9032404546
Website : www.trigafiresolutions.com

WORKING SCHEMATIC DRAWING

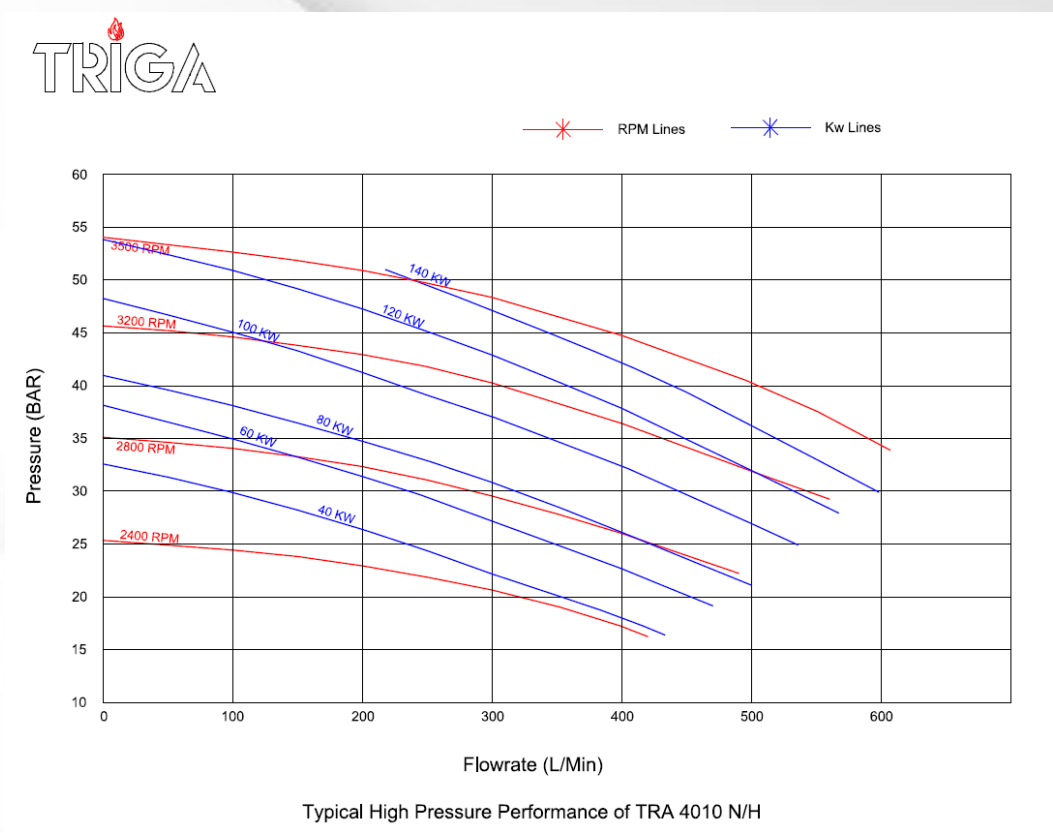
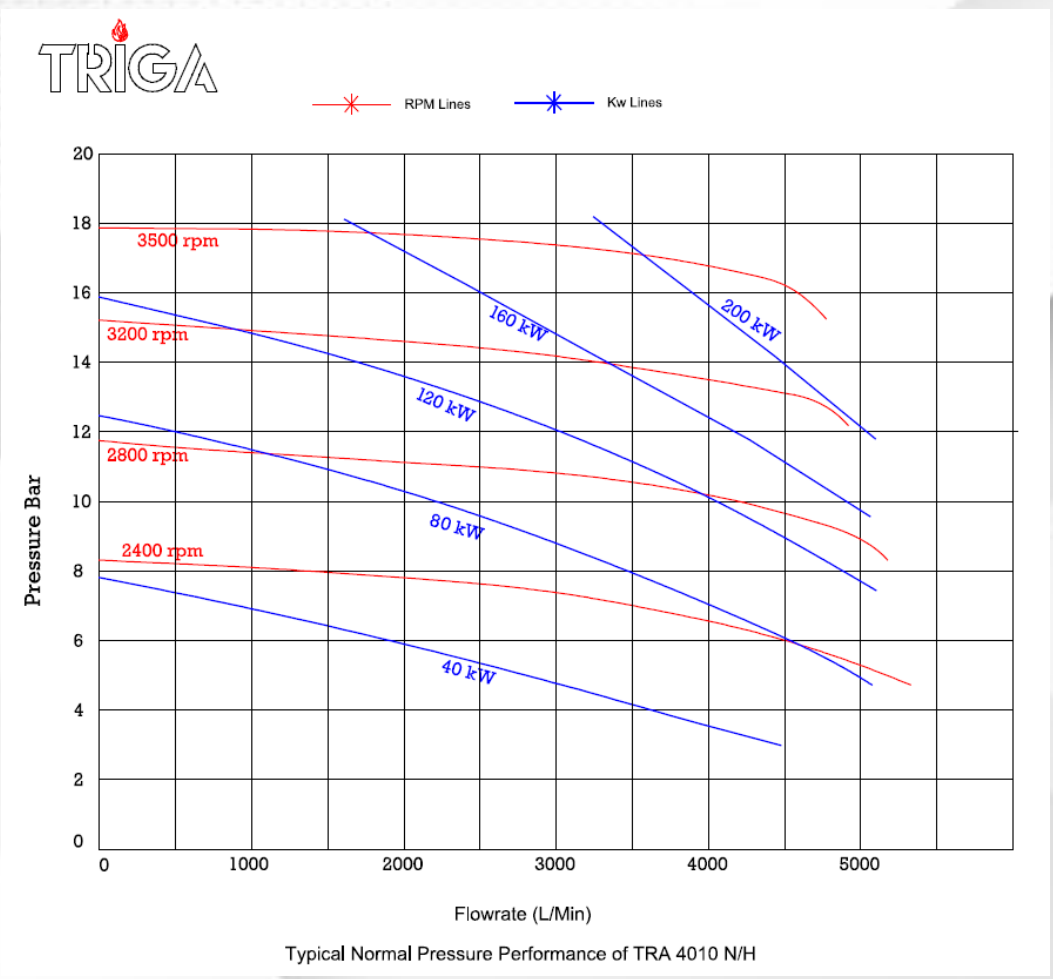
High Pressure Mode – OFF.
Low Pressure (10 Bar) available at LP Outlets.



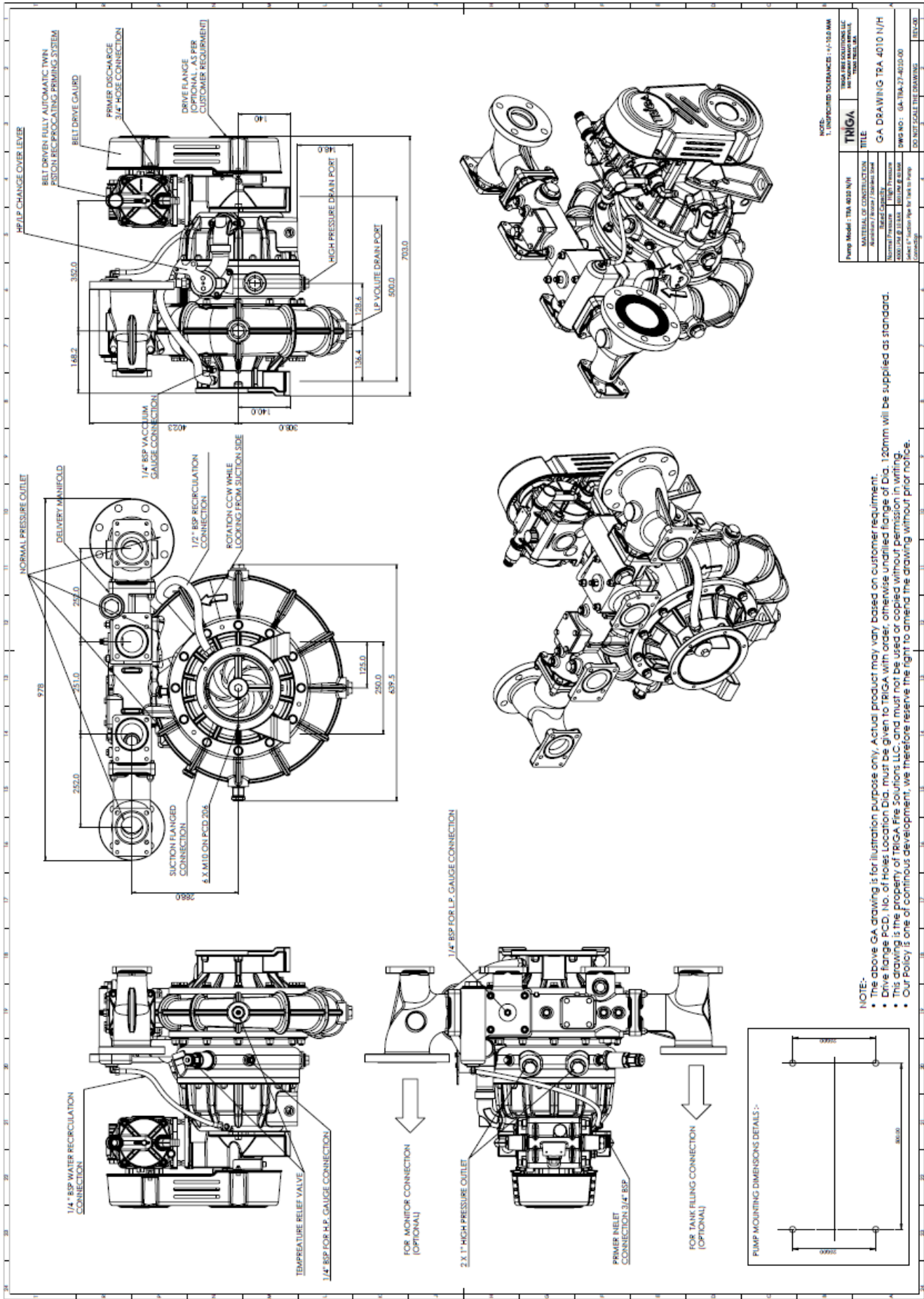
High Pressure Mode – ON.
Low Pressure (10Bar) and High Pressure (40Bar) Simultaneously available at respective Outlets.



TYPICAL PERFORMANCE CURVE



GA DRAWING TRA 4010 N/H

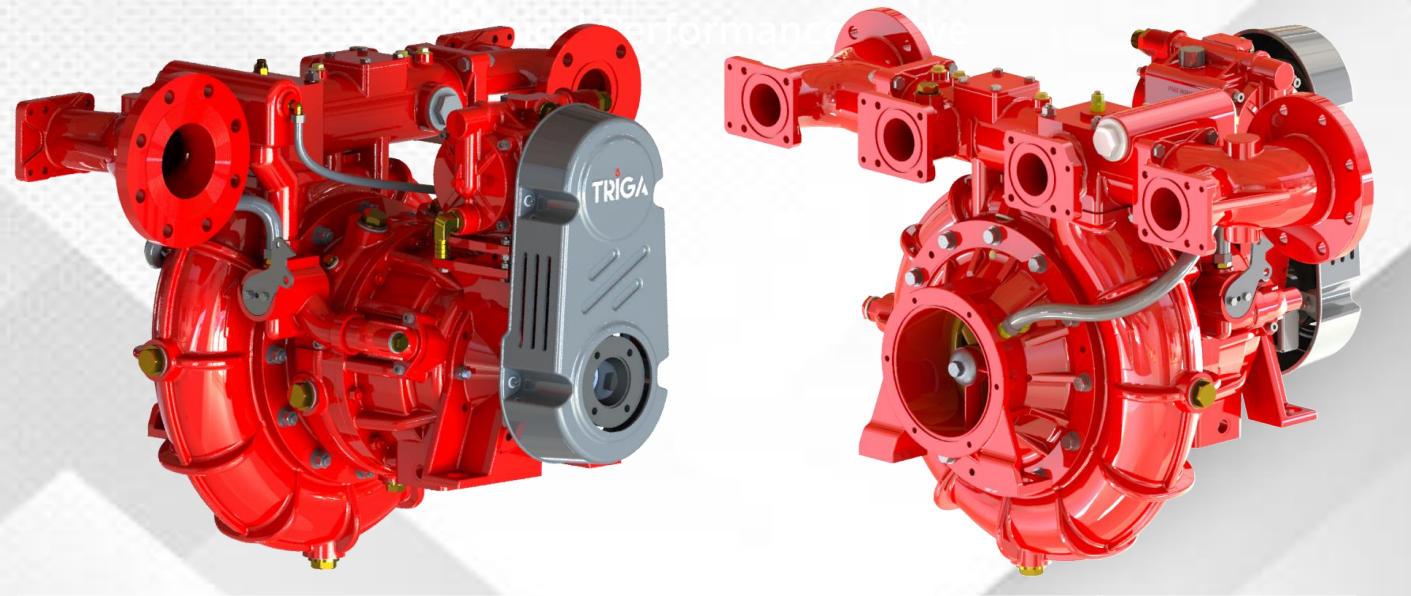


NOTE:
1. UNFINISHED TOLERANCES: +/- 0.50 MM

Pump Model: TRA 4010 N/H	TRIGA
MATERIAL OF CONSTRUCTION: Aluminum Body / Stainless Steel	TITLE: GA DRAWING TRA 4010 N/H
Standard Pressure: 150 PSI	Scale: 1:1
Standard Flange: 150 PSI	Drawn By: GA-TRA-17-4010-AD
Standard Flange: 150 PSI	Checked By: GA-TRA-17-4010-AD
Standard Flange: 150 PSI	Rev: 1

NOTE:-

- The above GA drawing is for illustration purpose only. Actual product may vary based on customer requirement.
- Drive flange PCD, No. of Holes Location Dia. must be given to TRIGA with order, otherwise unutilized flange of Dia. 120mm will be supplied as standard.
- This drawing is the property of TRIGA Fire Solutions LLC, and must not be used or copied without permission in writing.
- Our Policy is one of continuous development, we therefore reserve the right to amend the drawing without prior notice.



Certified According to EN 1028					
P	Q	TRA-2010-N/H	TRA-3010-N/H	TRA-4010-N/H	TRA-6010-N/H
FPN 10-	2000	✓			
FPN 10-	3000		✓		
FPN 10-	4000			✓	
FPN 10-	6000				✓
FPH 40-	250	✓	✓	✓	✓

EN 1028: P=NOMINAL PRESSURE (BAR), Q = RATED OUTPUT (LPM)

UL Classified According to NFPA 1901					
P	Q	TRA-2010-N/H	TRA-3010-N/H	TRA-4010-N/H	TRA-6010-N/H
UL 150 -	500	✓			
UL 150 -	750		✓		
UL 150 -	1000			✓	
UL 150 -	1500				✓

UL: P = nominal pressure (PSI), Q = rated output (USGPM)