

## TR-ZONE-6

### Six Zone Interface Module

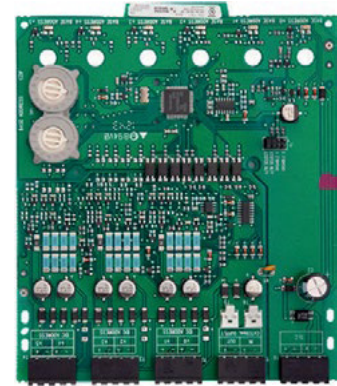
The TR-ZONE-6 is an addressable zone interface module for use with the Triga Series fire alarm control panels (FACPs). The IDPZONE- 6 provides six zone inputs that allow a Triga FACP to interface and monitor two-wire conventional smoke detectors. This means you can retrofit an existing building and use existing conventional devices.

The inputs on the TR-ZONE-6 share a common FACP signaling line circuit (SLC) input, and the initiating device circuits share a common external power supply. Otherwise, each input on the module operates independently from the others. If needed, you can disable a maximum of two unused inputs on the TR-ZONE-6 board.

It transmits the status of a zone of two-wire detectors to the FACP. Status conditions are reported as normal, open or alarm. The TR-ZONE-6 supervises the zone of detectors and the connection of the external power supply. All two-wire detectors being monitored must be UL compatible with the TR-ZONE-6.

#### INSTALLATION

The TR-Zone-6 mounts in the TR-IDP-ACB cabinet. The TR-IDP-ACB has a built-in chassis that will accommodate one or two TR-Zone-6 modules.



TR-ZONE-6

## FEATURES & BENEFITS

- Converts a conventional two-wire loop to an SLC loop
- Six zone inputs
- Fully supervised
- Support for Class B and Class A wiring
- Removable 12 to 18 AWG plug-in terminal blocks
- Individual LED for each relay contact
- Two module mounting in the TR-IDP-ACB cabinet
- Up to two unused modules can be disabled
- Rotary address switches for fast installation
- Mounting hardware included
- UL Listed



## Technical Specifications

### SPECIFICATIONS

**Physical:** 6.8" H x 5.8" W x 1.25" D

**Shipping Weight:** 6.3oz (196g)

### ELECTRICAL RATINGS

**Operating Voltage:** 15 to 32VDC

**Standby Current:** 2mA

**Alarm Current:** 40mA max.

(Assumes all six LEDs solid on)

**Initiating Device Circuit:** Supervised, power-limited

**Max. IDC Wiring Resistance:** 25W max

**External Power Supply**

**Standby Current:** 50mA

**Alarm Current:** 270mA

**End-of-Line Resistance:** 3.9k W

### ENVIRONMENTAL

**Operating Temperature:** 32°-120°F (0°C - 49°C)

**Humidity:** 10 to 93% (non-condensing)

### ORDERING INFORMATION

**TR-ZONE-6:** Six Zone Two-Wire Interface Module

### ACCESSORIES

**TR-IDP-ACB:** Module Cabinet. Cabinet holds two

TR-ZONE-6 15.25" H x 12.5" W x 3" D

### COMPATIBILITY

The TR-ZONE-6 is compatible with the following Triga Series FACPs:

- TR-2100R / TR-2100B
- TR-2100ECSR / TR-2100ECSB
- TR-R2100R / TR-R2100B

This document is not intended to be used for installation purposes. We try to keep our product information up-to date and accurate. We cannot cover all specific applications or anticipate all requirements. All specifications are subject to change without notice.

**TRIGA INVESTMENTS, LLC**  
340 Taxiway Bravo Beeville, TX 78102,  
Tel: +1330-577-5199. Email: info@trigaglobal.com