

TR-RELAY-6

Addressable Relay Module

The TR-RELAY-6 is an addressable relay module for use with Triga Series fire alarm control panels (FACPs). The TR-Relay-6 has six Form C relays. It allows a Triga FACP to switch discrete contacts by code command. If needed, you can disable a maximum of three unused modules on the TR-RELAY-6 board. No supervision is provided for the notification appliance circuit.

The TR-RELAY-6 contacts can be used for virtually any normally open or normally closed application. Each TR-RELAY-6 is programmed with a unique signaling line circuit (SLC) loop address. When an event occurs that controls the TR-RELAY-6, the relay is triggered by the FACP.

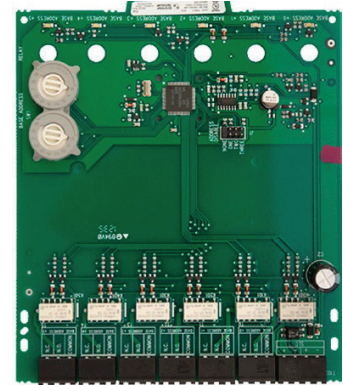
INSTALLATION

The TR-RELAY-6 mounts in the Triga TR-IDP-ACB cabinet. The TR-IDP-ACB has a built-in chassis that will accommodate one or two TR-RELAY-6 modules.

COMPATIBILITY

The TR-RELAY-6 is compatible with the following Triga Series FACPs:

- TR-2100R / TR-2100B
- TR-2100ECSR / TR-2100ECSB
- TR-R2100R / TR-R2100B



TR-RELAY-6

FEATURES & BENEFITS

- | | | | |
|--|--|--|--|
| <ul style="list-style-type: none"> • Six Form C contacts • Removable 12 to 18AWG plug-in terminal blocks • Relay programming is completely flexible—can be mapped to zone conditions • Individual LED for each relay contact | <ul style="list-style-type: none"> • Two module mounting in the TR-IDP-ACB cabinet • Up to three unused modules can be disabled • Rotary address switches for fast installation | <ul style="list-style-type: none"> • Mounting hardware included • Class A or B operation | <ul style="list-style-type: none"> • UL Listed • FM Approved |
|--|--|--|--|



Technical Specifications

SPECIFICATIONS

Physical: 6.8" H x 5.8" W x 1.25" D

Shipping Weight: 6.3oz (196g)

ELECTRICAL RATINGS

Operating Voltage: 15 to 32VDC

Standby Current: 1.6mA maximum

Alarm Current: 55mA

Relay Contact Ratings:

2.0A @ 25VAC (PF=.35), non-coded

3.0A @ 30VDC resistive, non-coded

2.0A @ 30VDC resistive, coded

0.46A @ 30VDC (L/R=20ms), non-coded

0.7A @ 70.7VAC (PF=.35), non-coded

0.9A @ 125VDC resistive, non-coded

0.5A @ 125VAC (PF=.75), non-coded

0.3A @ 125VAC (PF=.35), non-coded

ORDERING INFORMATION

TR-RELAY-6: Six Relay Module

ACCESSORIES

TR-IDP-ACB: Cabinet. 15.25" H x 12.5" W x 3" D

This document is not intended to be used for installation purposes. We try to keep our product information up-to date and accurate. We cannot cover all specific applications or anticipate all requirements. All specifications are subject to change without notice.

TRIGA INVESTMENTS, LLC
340 Taxiway Bravo Beeville, TX 78102,
Tel: +1330-577-5199. Email:info@trigaglobal.com